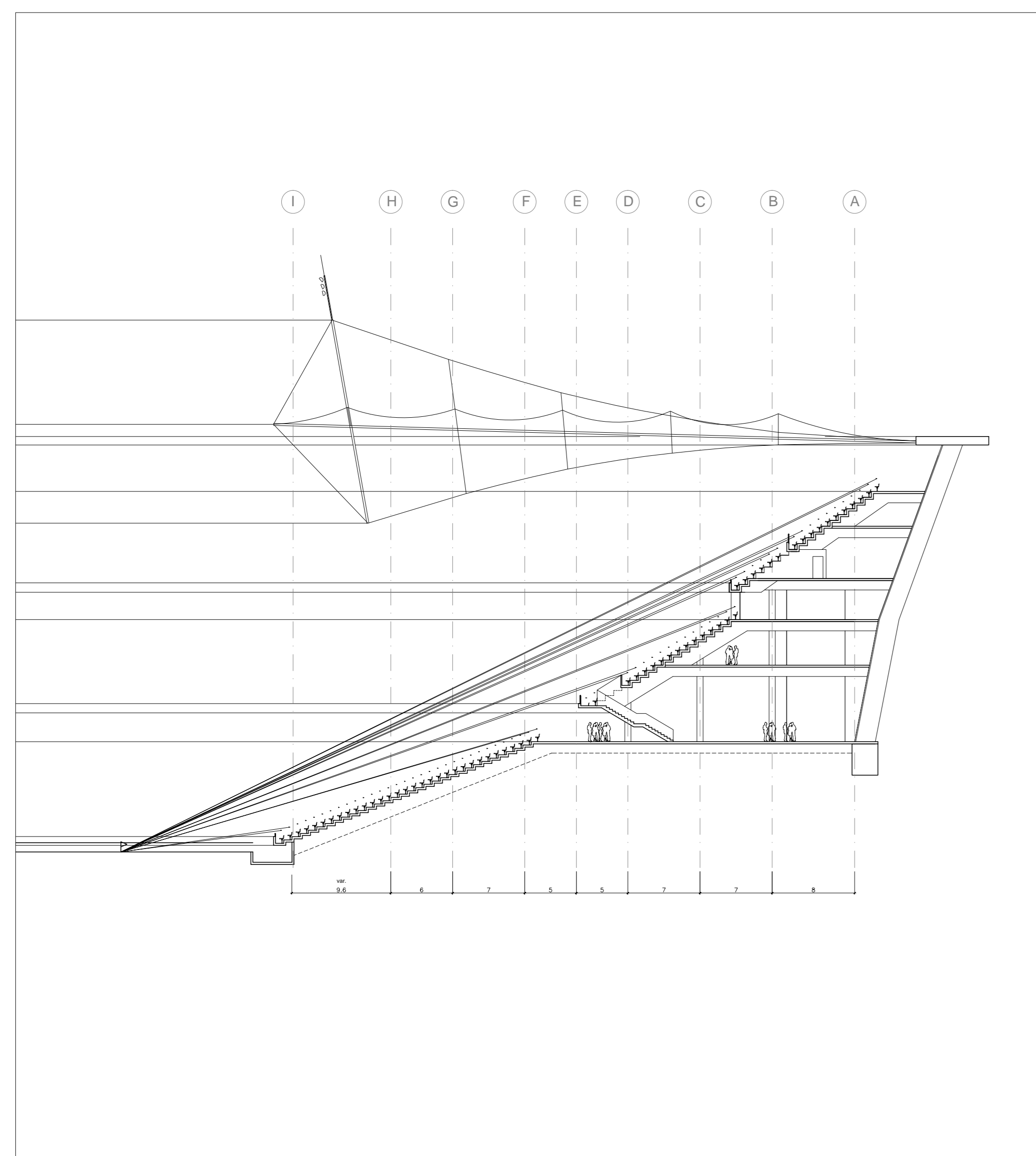


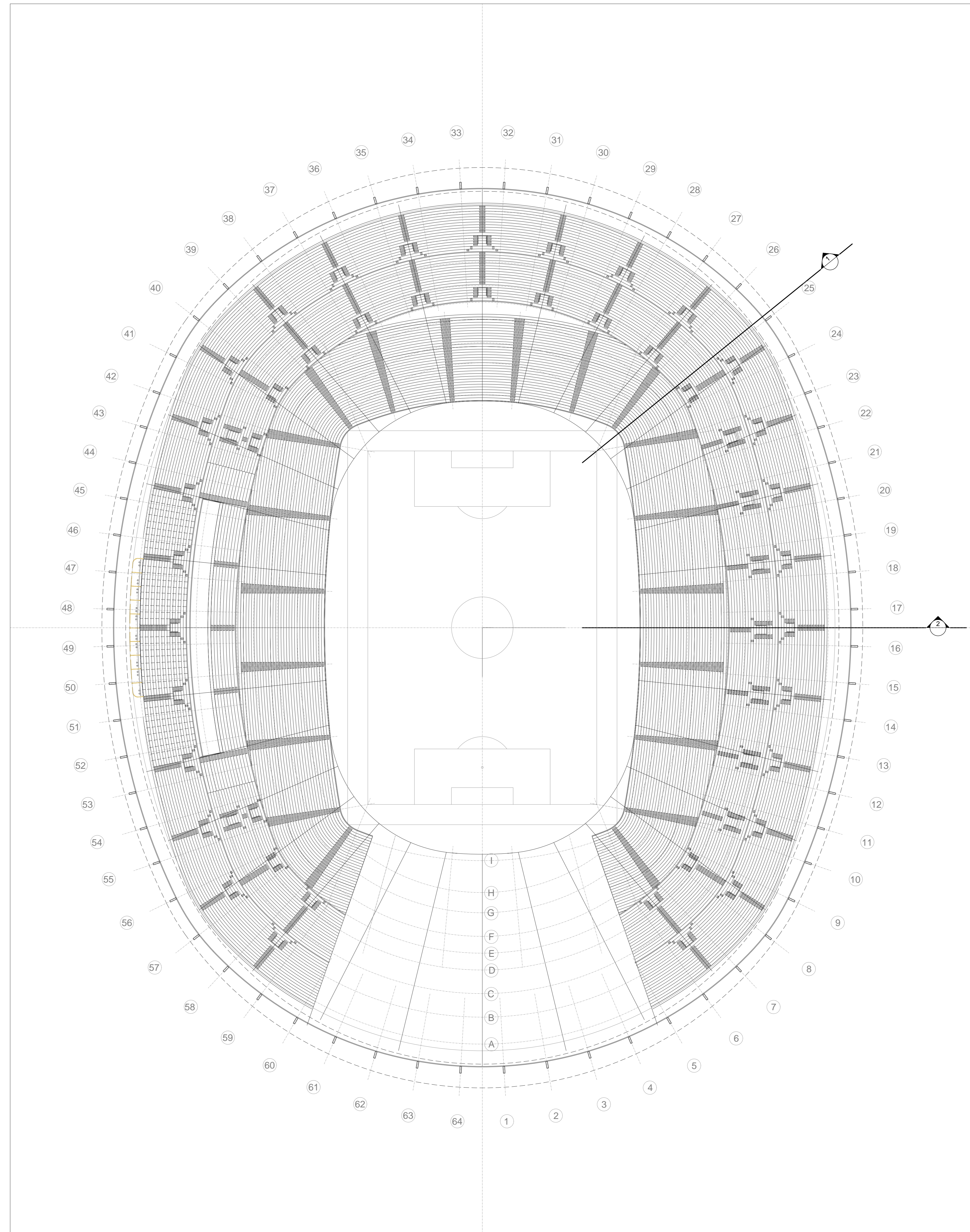
row	N = riser height	R = height point of focus	T = seating row depth	D = Distance point of focus	C = C-Value
Lower tier					
1	85	210	80	900	-
2	28	236	80	980	8.6
3	28	262	80	1060	7.9
4	28	288	80	1140	7.4
5	28	314	80	1220	6.9
6	28	340	80	1300	6.5
7	28	366	80	1380	6.1
8	30	408	80	1460	5.8
9	30	438	80	1540	5.5
10	30	468	80	1620	5.2
11	30	498	80	1700	4.9
12	30	528	80	1780	4.6
13	30	558	80	1860	4.3
14	32	590	80	1940	4.0
15	32	622	80	2020	3.7
16	32	654	80	2100	3.4
17	32	686	80	2180	3.1
18	32	718	80	2260	2.8
19	32	750	80	2340	2.5
20	32	782	80	2420	2.2
21	34	816	80	2500	1.9
22	34	850	80	2580	1.6
23	34	884	80	2660	1.3
24	34	918	80	2740	1.0
25	34	952	80	2820	0.7
26	34	986	80	2900	0.4
27	34	1020	80	2980	0.1
28	34	1054	80	3060	-
29	34	1088	80	3140	-
30	34	1122	80	3220	-
31	36	1158	80	3300	-
32	36	1194	80	3380	-
Middle tier					
33	1369	1484	80	3460	-
34	47	1541	80	3540	7.7
35	47	1598	80	3620	7.5
36	47	1655	80	3700	7.2
37	47	1712	80	3780	7.0
38	47	1769	80	3860	6.8
39	50	1826	80	3940	6.6
40	50	1883	80	4020	6.4
41	50	1940	80	4100	6.2
42	50	1997	80	4180	6.0
43	50	2054	80	4260	5.8
44	50	2111	80	4340	5.6
45	50	2168	80	4420	5.4
46	50	2225	80	4500	5.2
47	50	2282	80	4580	5.0
48	50	2339	80	4660	4.8
49	50	2396	80	4740	4.6
50	50	2453	80	4820	4.4
51	50	2510	80	4900	4.2
Upper tier					
52	2539	2694	80	4980	-
53	64	2718	80	5060	6.7
54	64	2772	80	5140	6.6
55	64	2826	80	5220	6.5
56	64	2880	80	5300	6.4
57	67	2937	80	5380	6.2
58	67	2994	80	5460	6.1
59	67	3051	80	5540	6.0
60	67	3108	80	5620	5.9
61	67	3165	80	5700	5.8
62	67	3222	80	5780	5.7
63	67	3279	80	5860	5.6
64	67	3336	80	5940	5.5
65	67	3393	80	6020	5.4
66	67	3450	80	6100	5.3
67	67	3507	80	6180	5.2
68	67	3564	80	6260	5.1
69	67	3621	80	6340	5.0

1 VISIBILITY IN CORNER (WORST CASE)
ESC. 1:500



row	N = riser height	R = height point of focus	T = seating row depth	D = Distance point of focus	C = C-Value
Lower tier					
1	85	210	80	1360	-
2	28	236	80	1440	14.8
3	28	262	80	1520	14.0
4	28	288	80	1600	13.3
5	28	314	80	1680	12.7
6	28	340	80	1760	12.1
7	28	366	80	1840	11.6
8	30	408	80	1920	11.1
9	30	438	80	2000	10.6
10	30	468	80	2080	10.2
11	30	498	80	2160	9.8
12	30	528	80	2240	9.4
13	30	558	80	2320	9.0
14	32	590	80	2400	8.6
15	32	622	80	2480	8.2
16	32	654	80	2560	7.8
17	32	686	80	2640	7.4
18	32	718	80	2720	7.0
19	32	750	80	2800	6.6
20	32	782	80	2880	6.2
21	34	816	80	2960	5.8
22	34	850	80	3040	5.4
23	34	884	80	3120	5.0
24	34	918	80	3200	4.6
25	34	952	80	3280	4.2
26	34	986	80	3360	3.8
27	34	1020	80	3440	3.4
28	34	1054	80	3520	3.0
29	34	1088	80	3600	2.6
30	34	1122	80	3680	2.2
31	36	1158	80	3760	1.8
32	36	1194	80	3840	1.4
Middle tier					
33	1369	1484	80	4000	-
34	47	1541	80	4080	16.8
35	47	1598	80	4160	16.5
36	47	1655	80	4240	16.2
37	47	1712	80	4320	15.9
38	50	1769	80	4400	15.6
39	50	1826	80	4480	15.3
40	50	1883	80	4560	15.0
41	50	1940	80	4640	14.7
42	50	1997	80	4720	14.4
43	50	2054	80	4800	14.1
44	50	2111	80	4880	13.8
45	50	2168	80	4960	13.5
46	50	2225	80	5040	13.2
47	50	2282	80	5120	12.9
48	50	2339	80	5200	12.6
49	50	2396	80	5280	12.3
50	50	2453	80	5360	12.0
51	50	2510	80	5440	11.7
Upper tier					
52	2539	2694	80	5480	-
53	64	2718	80	5560	14.9
54	64	2772	80	5640	14.5
55	64	2826	80	5720	14.1
56	64	2880	80	5800	13.7
57	67	2937	80	5880	13.3
58	67	2994	80	5960	12.9
59	67	3051	80	6040	12.5
60	67	3108	80	6120	12.1
61	67	3165	80	6200	11.7
62	67	3222	80	6280	11.3
63	67	3279	80	6360	10.9
64	67	3336	80	6440	10.5
65	67	3393	80	6520	10.1
66	67	3450	80	6600	9.7
67	67	3507	80	6680	9.3
68	67	3564	80	6760	8.9
69	67	3621	80	6840	8.5

2 VISIBILITY IN SIDELINE
ESC. 1:500



3 GEOMETRY
ESC. 1:750

2014 FIFA World Cup Brazil™
Local Organising Committee

Scale: 1/750
Drawn by: CLAAS SCHULITZ
Index: -
Date: 12.08.2009

SAL-SALVADOR
FIFA World Cup Stadium
VISIBILITY PLAN
Level 10
Plannumber: 00_planta de visibilidade

Architects:
Setepa - Schultz Architektur+Technologie
R. Rego Freitas, 289
Via Buarque - 01220-010
011 4161 1100