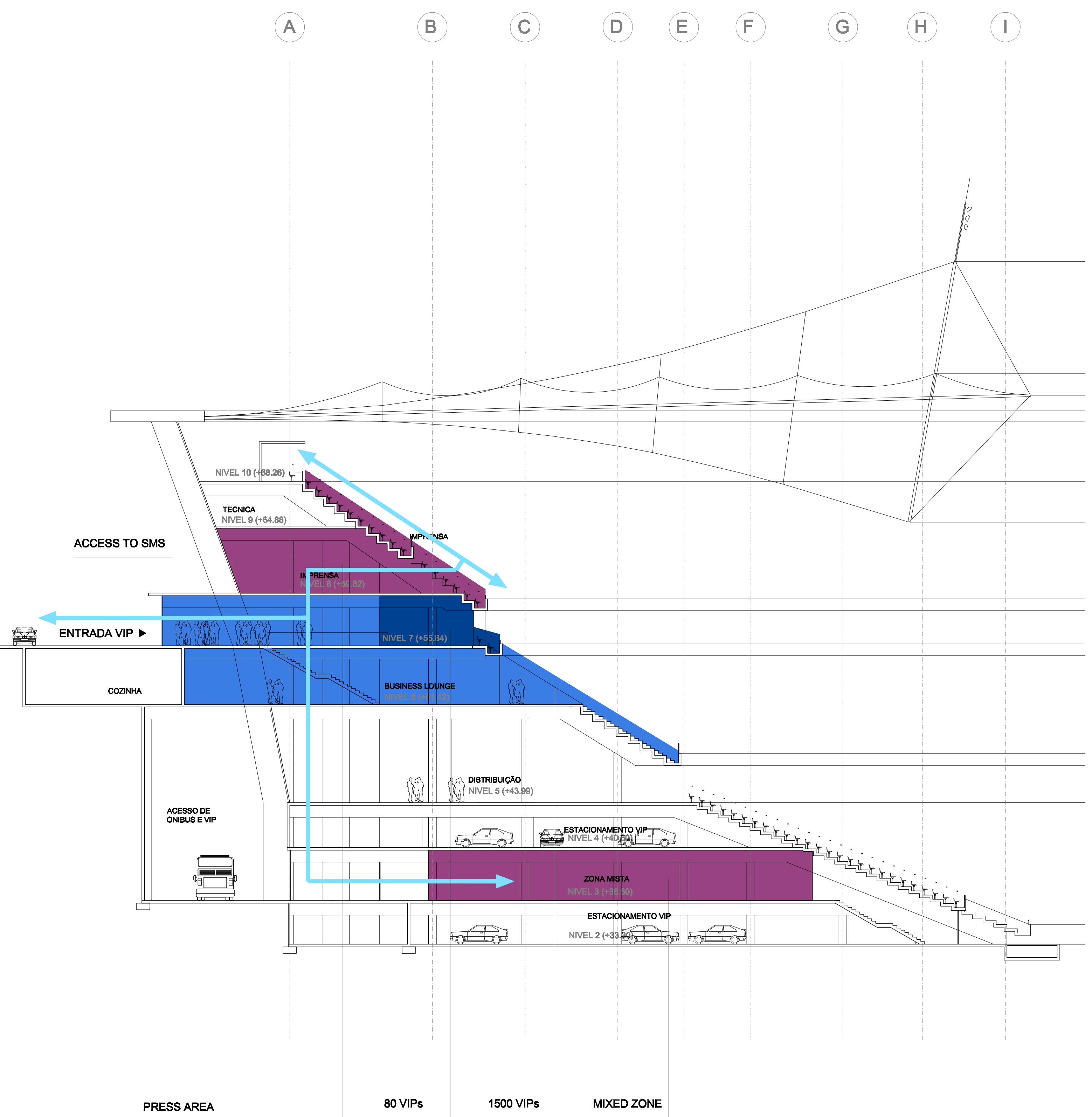


- BUS PARKING PLAYERS
- VIP PARKING
- STADIUM ADMINISTRATION / FIFA OFFICES
- PLAYERS
- BROADCASTING
- MEDIA PRESS
- SECURITY MEDICAL EMERGENCY
- STORAGE
- PUBLIC KIOSKS
- VIP
- VIP
- HOSPITALITY

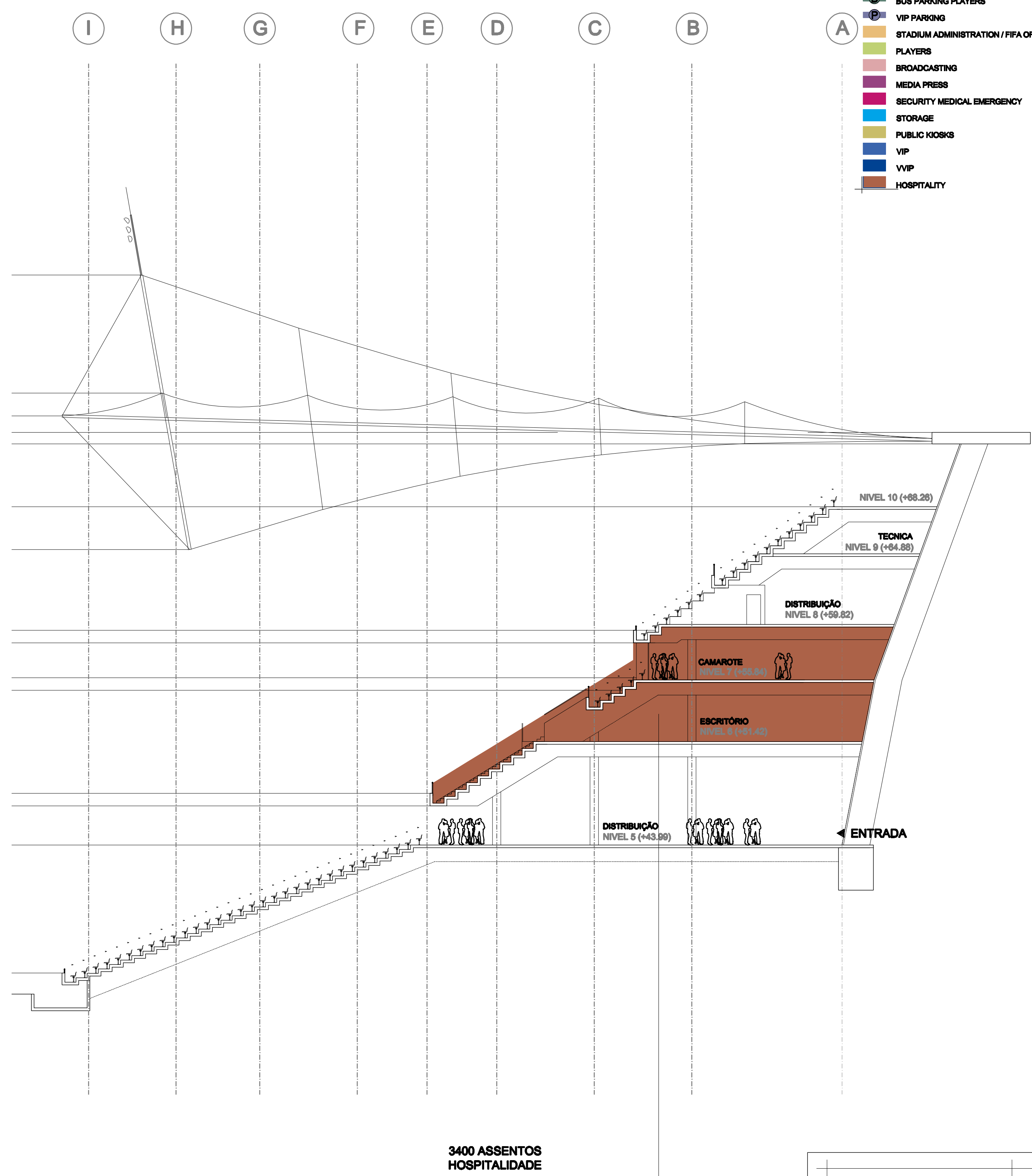


PRESS AREA  
200 POSIÇÕES COMENTARISTAS

80 VIPs

1500 VIPs

MIXED ZONE



3400 ASSENTOS  
HOSPITALIDADE

3400 SEATS HOSPITALITY


1404 Consult  
Scale: 1/200

**2014 FIFA World Cup Brazil™**  
Local Organising Committee

---

Scale: 1/200  
Drawn by: CLAES SCHULTZ  
Index: -  
Date: 22.07.2009

**SAL-SALVADOR**  
FIFA World Cup Stadium  
**SECTIONS**

-  
Plannumber: SAL\_SH\_CORTE

**Architects:**  
Seppia - Schultz Architektur+Technologie  
R. Rogo Freitas, 209  
Vila Burque - 01220-010  
São Paulo - Brasil